

# CONGRATULATIONS ON YOUR PURCHASE OF THE FINEST NOTCHING TOOL AVAILABLE

PLEASE READ CAREFULLY BEFORE USE

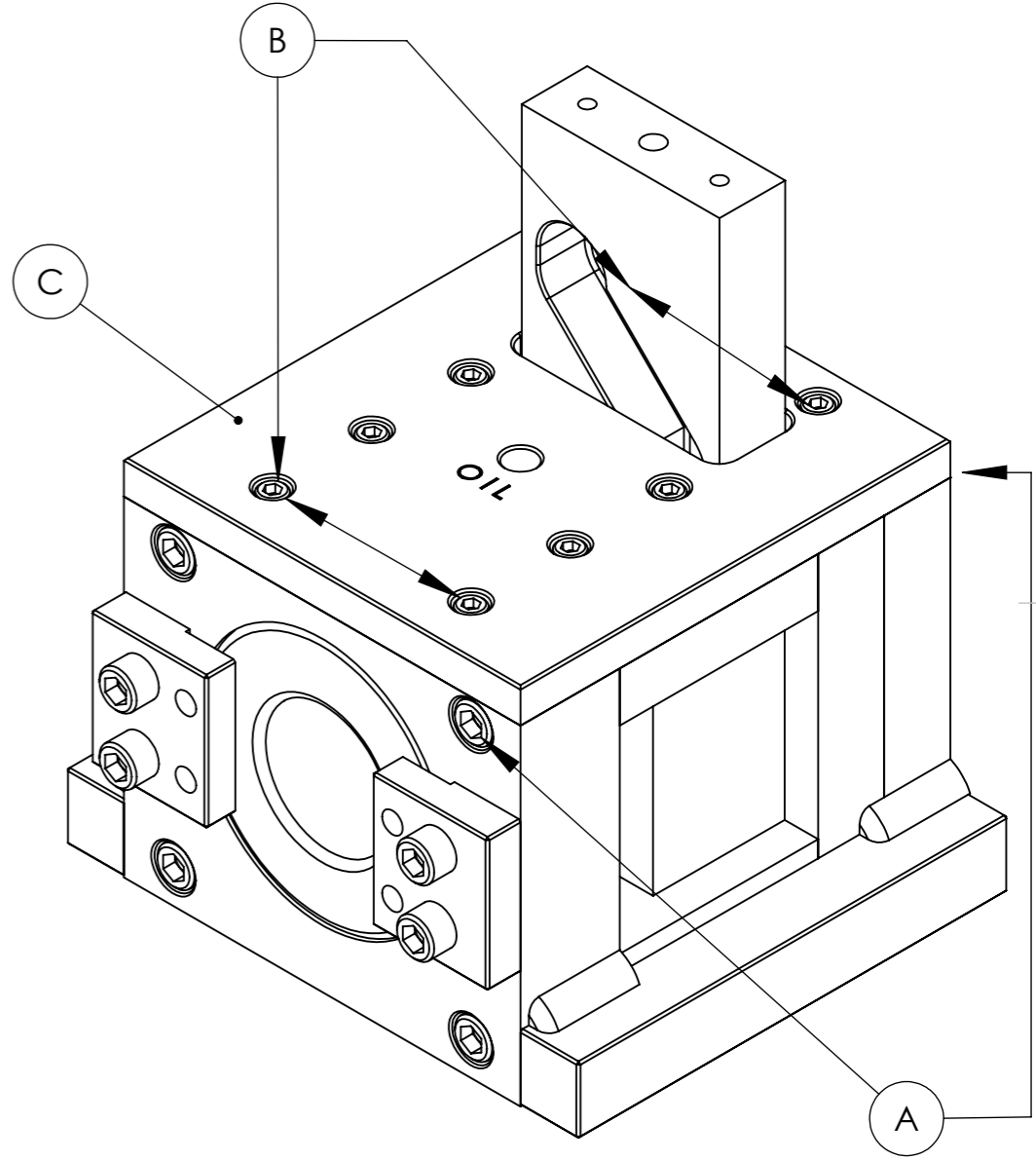
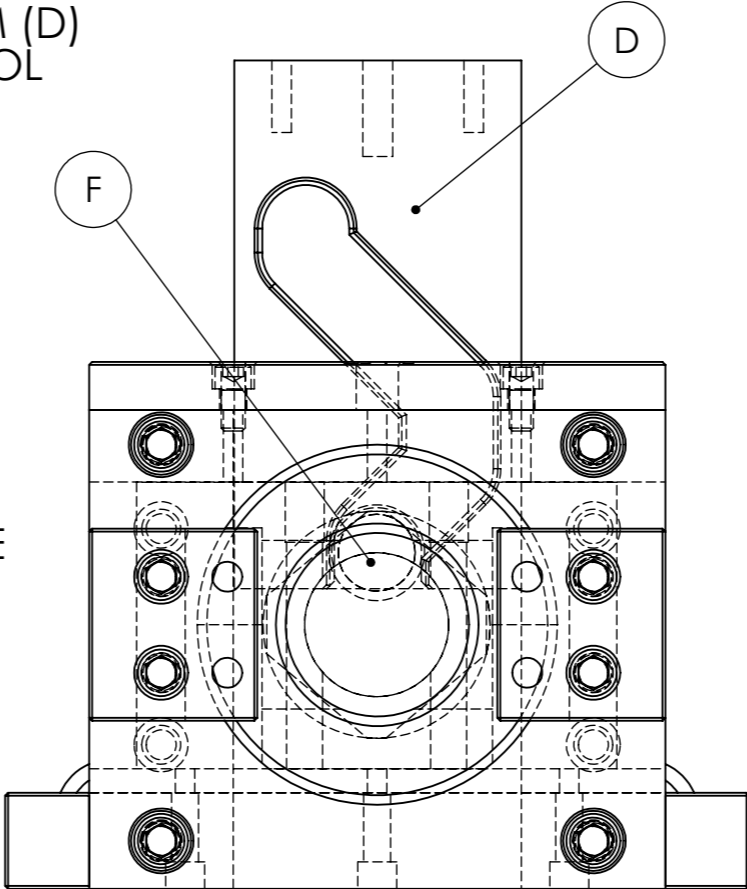
**IMPORTANT!**

**1) TOOL SET-UP**

MAKE SURE CAM FOLLOWER (F) DOES NOT LEAVE CAM (D) AT HIGHEST POINT OF STROKE. SEVERE DAMAGE TO TOOL WILL OCCUR!

**2) KEEP YOUR TOOL CLEAN**

WHENEVER DIRT OR METAL CHIPS ACCUMULATE, PLEASE REMOVE FOUR 3/8-16 BOLTS (A) THAT RETAIN TOP COVER PLATE (C). REMOVE FOUR 1/4-20 BOLTS (B) AND LIFT OFF COVER PLATE (C) EXPOSING PUNCH HOLDER (G). CLEAN PUNCH HOLDER (G) AND RE-LUBRICATE USING NON-SULPHUR BASED HIGH PRESSURE LUBRICANT. REATTACH COVER PLATE (C) WITH BOLTS (B) AND (A).



**CAUTION!**  
ALWAYS USE ALL  
GUARDS ON MACHINES  
AND USE SAFETY GLASSES.  
NEVER REMOVE RETAINING PINS  
WHICH HOLDS PUNCH IN  
PUNCH HOLDER

CONTACT INFORMATION	WEB <a href="http://www.projecttool&amp;die.com">www.projecttool&amp;die.com</a>
NAME	E-MAIL
MIKE L.	<a href="mailto:projecttool1@shasta.com">projecttool1@shasta.com</a>
CHRIS L.	<a href="mailto:projecttool3@shasta.com">projecttool3@shasta.com</a>
PHONE	530 243 8903
FAX	530 243 8914

6955 DANYEUR ROAD  
REDDING, CA. 96001

## Project Tool & Die INSTRUCTIONS

MADE IN THE USA