

CONGRATULATIONS ON YOUR PURCHASE OF THE FINEST NOTCHING TOOL AVAILABLE

PLEASE READ CAREFULLY BEFORE USE

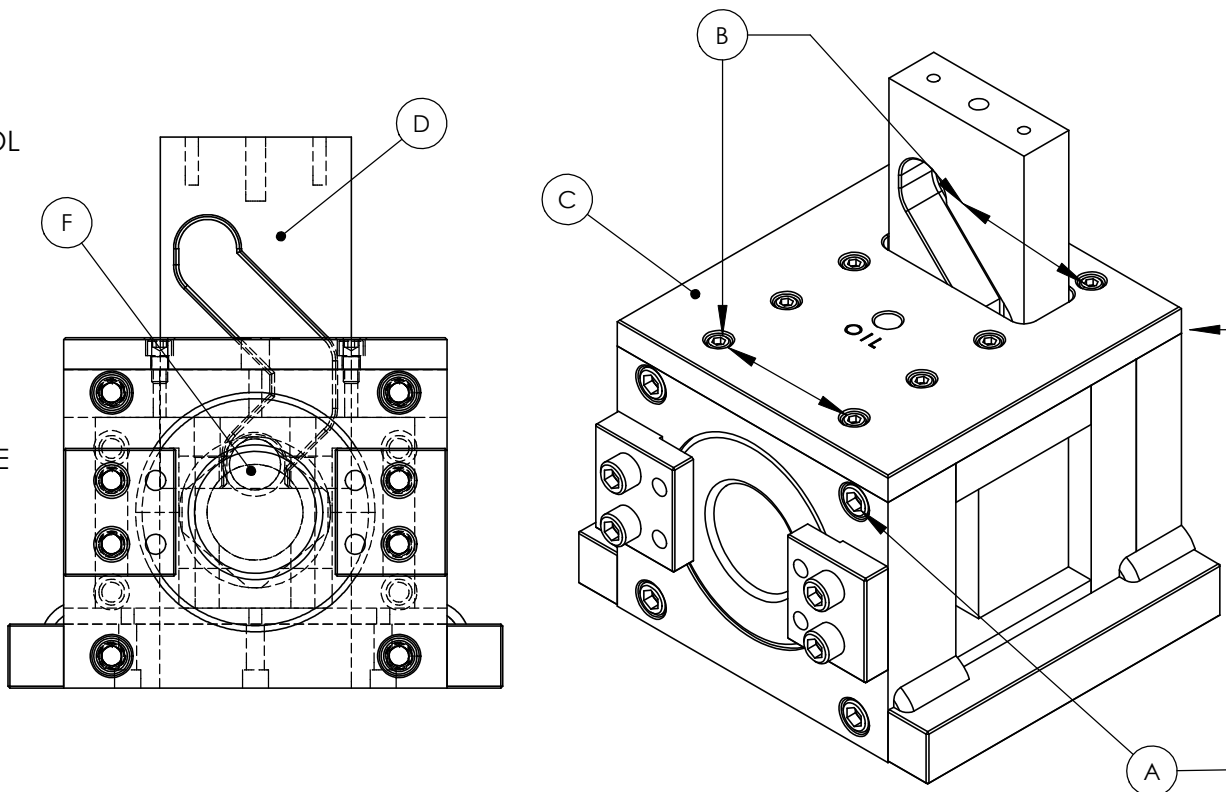
IMPORTANT!

1) TOOL SET-UP

MAKE CAM FOLLOWER (F) DOES NOT LEAVE CAM (D) AT HIGHEST POINT OF STROKE. SEVERE DAMAGE TO TOOL WILL OCCURE!

2) KEEP YOUR TOOL CLEAN

WHENEVER DIRT OR METAL CHIPS ACCUMULATE, PLEASE REMOVE FOUR 3/8-16 BOLTS (A) THAT RETAIN TOP COVER PLATE (C). REMOVE FOUR 1/4-20 BOLTS (B) AND LIFT OFF COVER PLATE (C) EXPOSING PUNCH HOLDER (G). CLEAN PUNCH HOLDER (G) AND RE-LUBRICATE USING NON-SULPHUR BASED HIGH PRESSURE LUBRICANT. REATTACH COVER PLATE (C) WITH BOLTS (B) AND (A).



CAUTION!
ALWAYS USE ALL
GUARDS ON MACHINES
AND USE SAFETY GLASSES.
NEVER REMOVE RETAINING PINS
WHICH HOLDS PUNCH IN
PUNCH HOLDER

CONTACT INFORMATION	WEB	www.projecttool&die.com
	NAME	E-MAIL
	MIKE L.	projecttool1@shasta.com
	CHRIS L.	projecttool3@shasta.com
	PHONE	530 243 8903
	FAX	530 243 8914

6955 DANYEUR ROAD
REDDING, CA. 96001

Project Tool & Die

INSTRUCTIONS

MADE IN THE USA